

COMPENDIUM

Possible Title frame at beginning of film.



Compendium Log Line:

“What if in the future your words and life were scripted -- by someone else?”

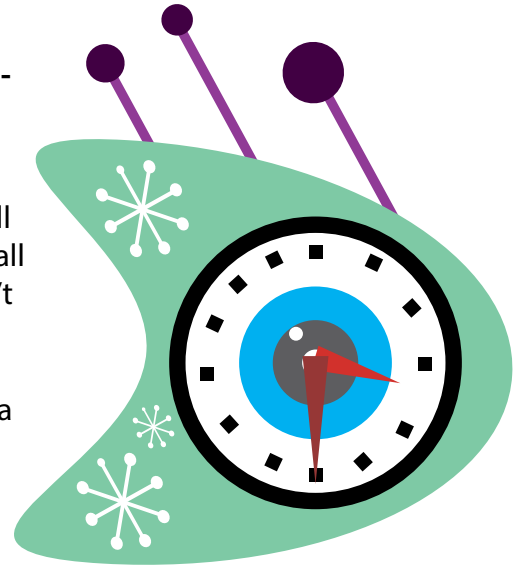
COMPENDIUM

It may seem odd to use an all retro look but this entire film is about things being off kilter. Even the soundtrack is played in reverse.

KITCHEN WALL CLOCKS -

Retro feel- 1960s

Kitchen Wall Clock - will be made by AI to be an all seeing eye. Clock doesn't work but will be hand moved. Notice the 13 numbers on the face as a homage to book 1984.



All seeing eye

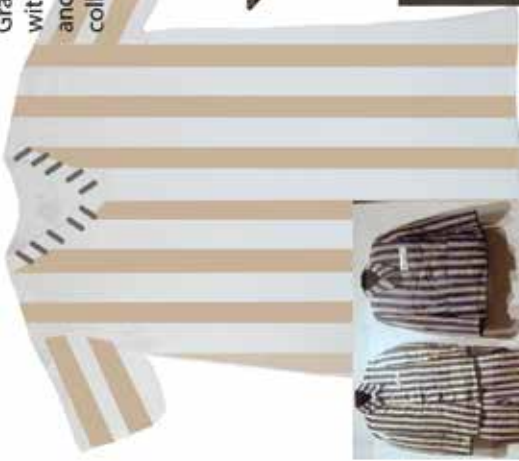


Vintage house coat. Add some buck lace features. Like the piping effect.



COMPENDIUM

Gray tshirt material with darker gray strips and gray buck collar



Buck lacing and gray vertical strips are the film motif.

Stripes harken to prison camp, malnourished (mentally), all clothing and walls are vertical prison striped.

Buck lacing is a Frankenstein monster motif of humans being walking dead stitched together.

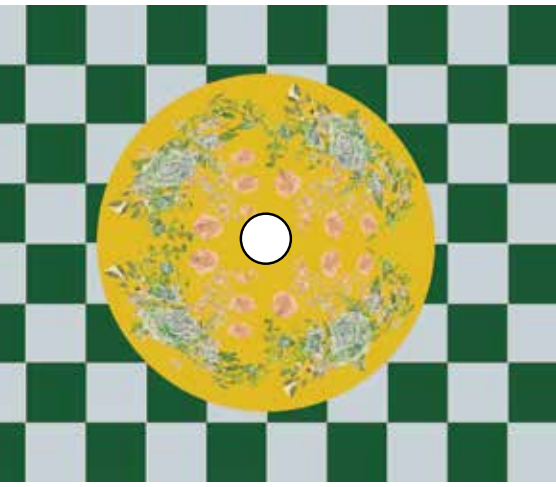


Wife characters housecoat will have vertical raised soft piping designs.

Hoodie is fake suede and terry cloth.



Floral table cloth and checkered flooring

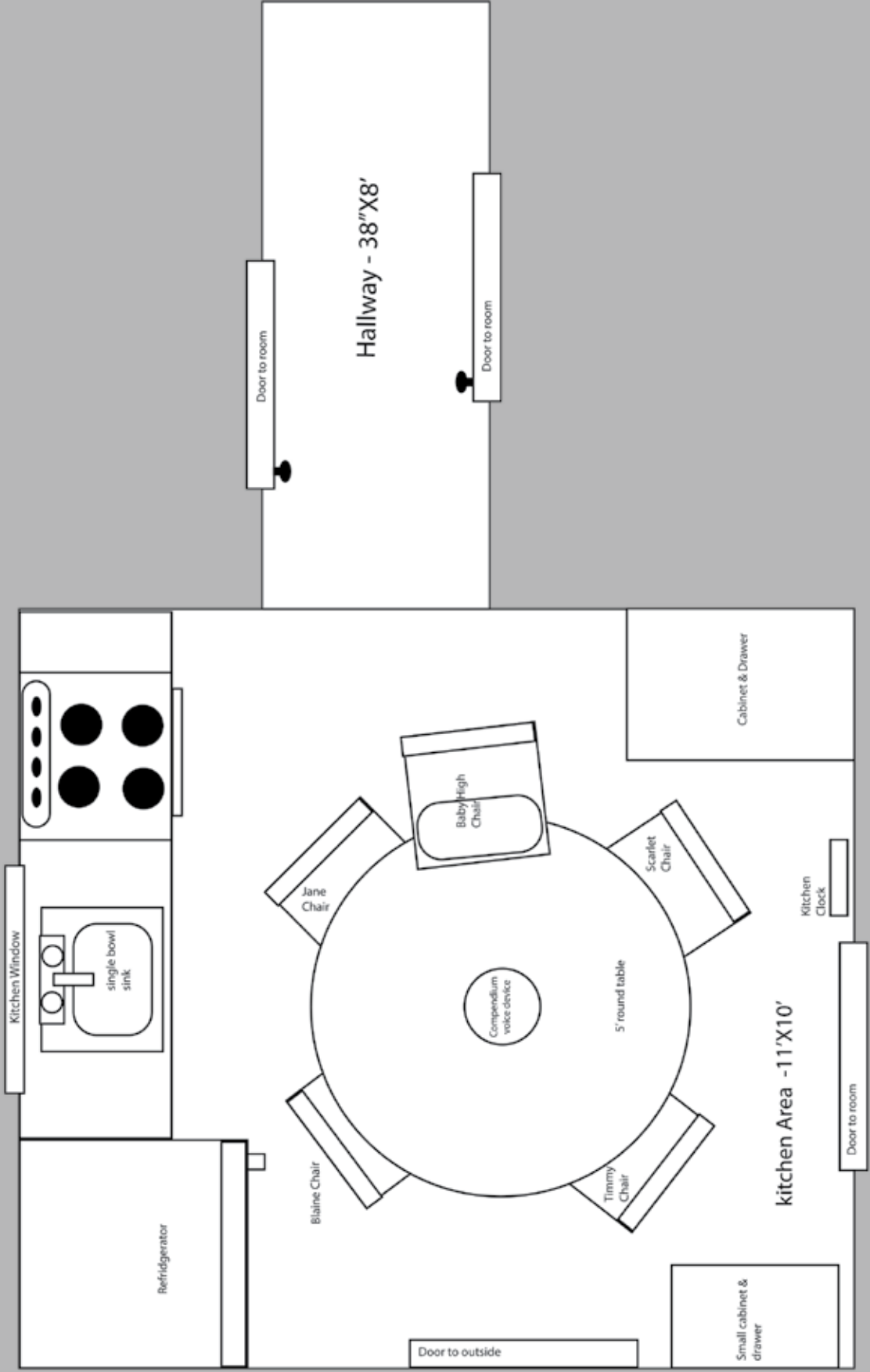


Linoleum tile flooring.

COMPENDIUM

SET FLOOR PLAN

March 19, 2020



The striped walls give a prison feel. The darker green stripes are painted with satin paint and the lighter greens are painted with flat paint. This is so when the lights go out and flashlights are going wildly, the satin stripes will reflect and bounce light adding to the prison feel.

